



GEM

Small Integrated CO2 Laser Marking Machine

GEM10F,GEM30F



GEM LASER CO.,LIMITED

GEM LASER LIMITED

A Legend Laser machine Manufacture & Solutions

Add . : No.442 ,Wuluo Road,Wuhan,430061 P.R.China .

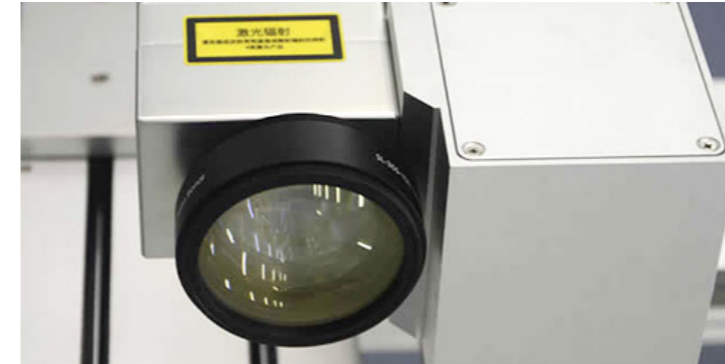
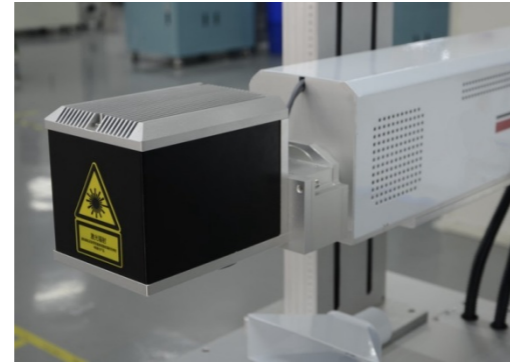
Tel. : +86-27-84793136

Fax : +86-27-84793136

E-mail: sales@gem-lasers.com

Web : www.gem-lasers.com

Product Advantage

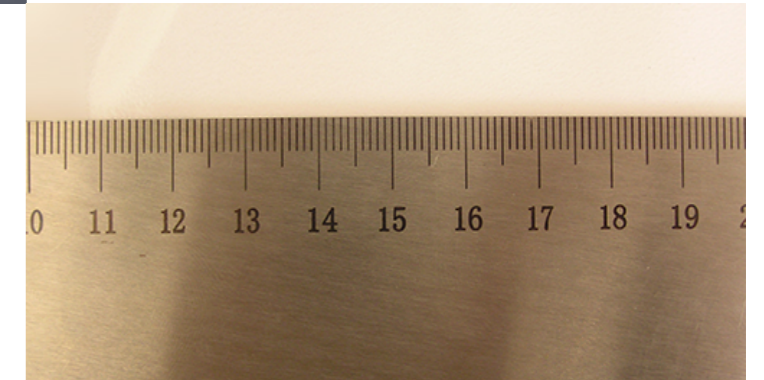


Fast Marking Speed

Professional industrial laser, fast marking speed, operated in 24 hours continuously, suitable for high-speed continuous production line.

High Precision Marking

High-precision galvanometer scanning system, uniform light spot, precision marking, 100% positive feedback.



OVERVIEW

Integrate with advanced galvanometer laser marking technology and imported RF excited sealed CO2 laser, the online laser marking machine has flexible structure, fast speed, high security, high efficiency, high electro-optic conversion efficiency, etc.

With Small integrated design, the CO2 laser marking machine integrates advanced galvanometer laser marking technology with imported RF excited sealed CO2 laser.



Low Energy Consumption

High electro-optic conversion efficiency, no consumables within 100,000 hours.

Flexible Structure

Friendly man-machine dialogue interface, easy operation and adjustment.



FEATURES

- Flexible structure, fast speed, high security;
- High efficiency, high electro-optic conversion efficiency;
- Long life, easy operation, low running cost, operated in 24 hours.

LASER MARKED SAMPLES



APPLICATIONS

It is widely used in clothing accessories, leather, food beverage packaging, electronic components, crafts, glass stone processing, and other areas graphics and text marking and cutting. It is also used in many non-metallic materials marking, such as paper packaging, plastic products, labels, leather fabrics, glass ceramic, resin plastics, wood products, PCB boards, etc.

SPECIFICATIONS

Model	GEM10F	GEM30F
Laser Source	US Imported RF excited sealed CO2 laser source	
Average Output Power	10W	30W
Wave Length	10.64μm	
Marking Area	70mm×70mm 110mm×110mm 175mm×175mm	
speed	≤7000mm/s	
Min Character Height	0.2mm	
Min Linear Width	0.1mm	
Power Supply	500W AC220V 50Hz	1.2KW AC220V 50Hz