



GEM Online CO2 Laser Marking Machine

GEM10C,GEM20C ,GEM30C,GEM55C,GEM70C



GEM LASER LIMITED

A Legend Laser machine Manufacture & Solutions

Add . : No.442 ,Wuluo Road,Wuhan,430061 P.R.China .

Tel. : +86-27-84793136

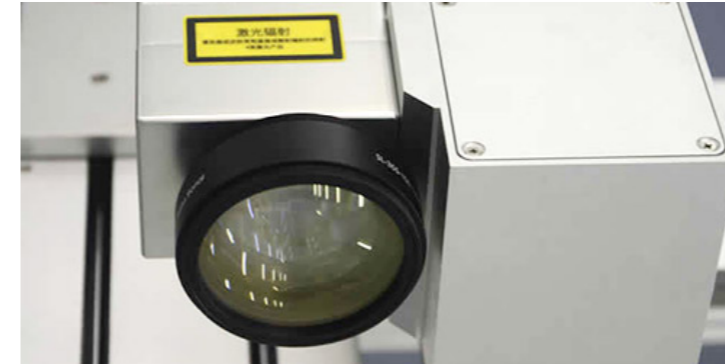
Fax : +86-27-84793136

E-mail: sales@gem-lasers.com

Web : www.gem-lasers.com

GEM LASER CO.,LIMITED

Product Advantage

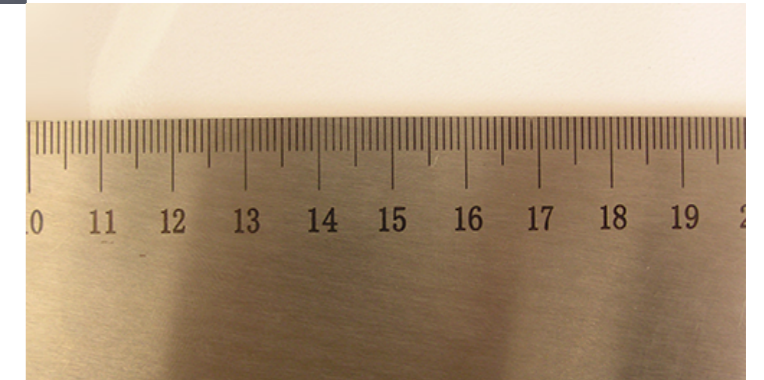


Fast Marking Speed

Professional industrial laser, fast marking speed, operated in 24 hours continuously, suitable for high-speed continuous production line.

High Precision Marking

High-precision galvanometer scanning system, uniform light spot, precision marking, 100% positive feedback.



OVERVIEW

Integrate with advanced galvanometer laser marking technology and imported RF excited sealed CO2 laser, the online laser marking machine has flexible structure, fast speed, high security, high efficiency, high electro-optic conversion efficiency, etc.

Online laser marking system series integrate advanced galvanometer laser marking technology with imported RF excited sealed CO2 laser. Combining laser technology with production line, it can mark on rapid moving products. This marking machine is mainly used in marking Chinese characters, English characters, figures, batch numbers, production dates, LOGO, real time clock information and anti-counterfeiting, especially the pharmaceutical industries GMP and food industries HACCP.



Low Energy Consumption

High electro-optic conversion efficiency, no consumables within 100,000 hours.

Flexible Structure

Friendly man-machine dialogue interface, easy operation and adjustment.



FEATURES

- Flexible structure, fast speed, high security;
- High efficiency, high electro-optic conversion efficiency;
- Long life, easy operation, low running cost, operated in 24 hours.

LASER MARKED SAMPLES



APPLICATIONS

Suitable for printing more precise mark on the parts of various materials. The marking content can be the product model, production date, serial number or various trademark patterns, bar codes and two-dimensional codes, etc.

Electronic components, IC chips, panel, measure, button, hardware, dial, hard alloy materials, etc.

SPECIFICATIONS

| Model | GEM10C | GEM20C | GEM30C | GEM55C | GEM70C |
|-------------------------|--|--------|---------------|---------------|--------|
| Wave Length(um) | 10.6 | 10.6 | 9.3/10.2/10.6 | 9.3/10.2/10.6 | 10.6 |
| Output Power(W) | ≥10 | ≥20 | ≥17/30 | ≥55 | ≥70 |
| Marking Speed | ≥7m/s | | | | |
| Marking Area | 110mm | | | | |
| Marking Focus | 150mm | | | | |
| Marking Font | Scribing, dot matrix | | | | |
| Marking Mode | Static and dynamic | | | | |
| Online Speed | ≤120m/min | | | | |
| Marking Material | Label, paper, PET, HDPE, glass, wood, etc. | | | | |
| Temperature | 5-35℃ | | | | |
| Humidity | Relative humidity<95%, frost-free | | | | |
| Structure Material | High-quality aluminum alloy; stainless steel | | | | |
| Edit Mode | Computer software | | | | |
| Communication Interface | USB Interface; RS232 Interface | | | | |
| Power Supply | AV220V/50HZ | | | | |
| Rated Power | 500W | 600W | 800W | 1200W | 1200W |