



# GEM YAG depth laser marking machine

GEMJB-Z80



## GEM LASER LIMITED

A Legend Laser machine Manufacture & Solutions

Add . : No.442 ,Wuluo Road,Wuhan,430061 P.R.China .

Tel. : +86-27-84793136

Fax : +86-27-84793136

E-mail: [sales@gem-lasers.com](mailto:sales@gem-lasers.com)

Web : [www.gem-lasers.com](http://www.gem-lasers.com)



## OVERVIEW

GEMJB-Z80 type laser marking machine is our company to do a lot of improvement in the original design of laser products on the basis of a new generation of advanced laser marking machine upgrade, depth marking especially suitable for bearing and metal parts, the performance index of the best level in domestic similar products.

The condenser chamber is stable and efficient, better beam quality, laser power, high peak power, the pulse width is smaller, more concentrated energy; energy can be regulated continuously by the current, software control, carving deep <2.0mm; targeted industry.

## Product Advantage

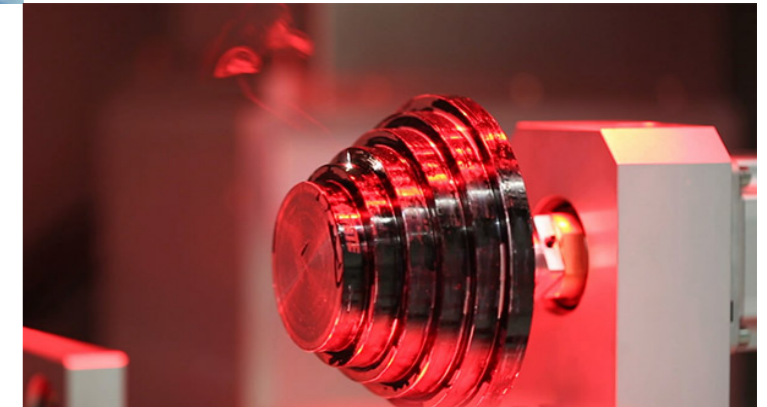


### High Speed

Perfect combination of software, hardware and light-speed galvanometer scanner realize high speed marking.

### Lower Energy Consumption

Significant operation cost reduction due to about 50% photoelectric conversion efficiency.



### High Reliability

Rapid cache transmission control, choice optical and electronic elements to ensure continuous work in long time and capacity.



### No Consumables

Improved lifetime of laser module, maintenance free and no consumables ensure low maintenance and operation cost.



## FEATURES

- Using new laser design, the laser power is stable, the output is 80W, and the beam quality is good.
- Adopt new vibration mirror design, increase the scanning angle of galvanometer, make the mirror work more safe and reliable, easy to install and debug, good heat dissipation.
- The new light seat design is adopted to make the laser mount solid and improve the stability of the laser for a long time.
- The electro-optic conversion rate of the laser at low current is improved.
- Improve the cooling system; effectively stabilize the laser output power.
- User-friendly software control system, more convenient and efficient operation.

## APPLICATIONS

Auto parts: piston, piston ring, gear, axletree, shafting, clutch, auto lamp, etc.

Electronic Components: resistance, capacitance, chip printed-circuit board, keyboard, etc.

Meter and instrument: panel, nicety instrument, etc.

Hardware tools: knife, tool, measure etc.

## LASER MARKED SAMPLES



## Specification

Model	GEMJB-Z80
Maximum laser output power	80W
Laser wavelength	1.064μm
Marking format	110mmx110mm
Marking line width	0.05mm-0.2mm
Marking depth	0.05mm-0.3mm
Marking speed	≤7000mm/s
Power demand	220V/50Hz/5W
Cooling requirements	air cooling
Overall size	1188mmx600mmx1200mm