



GEM Online Fiber laser marking Machine

GEMJB-F10A



GEM LASER LIMITED

A Legend Laser machine Manufacture & Solutions

Add . : No.442 ,Wuluo Road,Wuhan,430061 P.R.China .

Tel. : +86-27-84793136

Fax : +86-27-84793136

E-mail: sales@gem-lasers.com

Web : www.gem-lasers.com

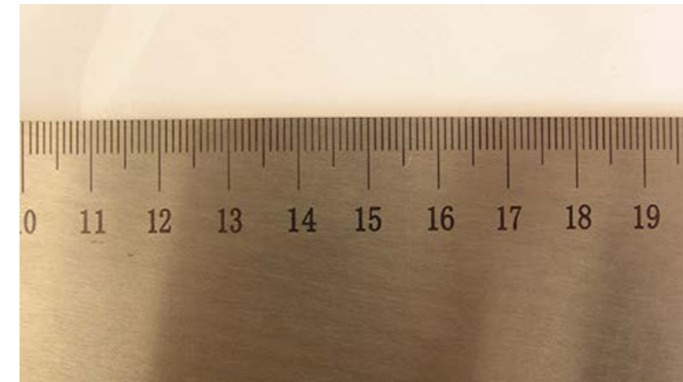
Product Advantage



OVERVIEW

The online laser marking machine is mainly used for all kinds of products in the surface or the outer package surface online inkjet marking, Compared with traditional static objects laser marking, online laser marking machine marks In the inkjet marking process, the products is flying in the production line, thereby greatly improving the production efficiency of the laser machine to adapt to the requirements of industrial production

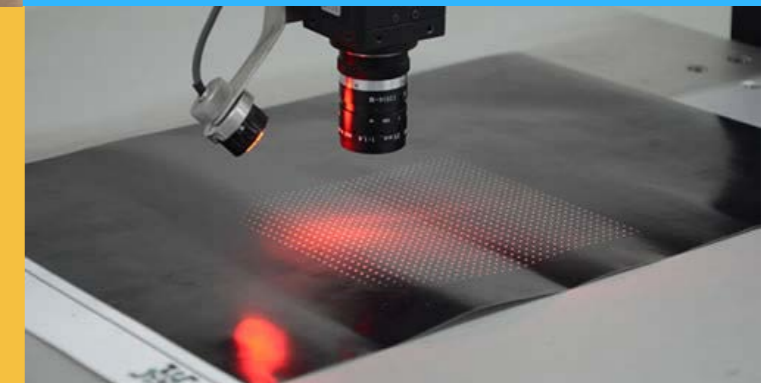
All of the application range of the light covering the ink-jet printer, the laser marking machine is no longer the product date and the number of simple tagging, due to its unique effect with visual and tactile features and never rub, so it also has the characteristics of strong anti-forgery,



Perfect Marking Effect
Can mark precise design on tiny surface
Known as the “King of Marking”

High Electro-optic Conversion Efficiency

Little energy coupling loss, cost saving,
long service life, maintenance-free
within 100,000 hours



Long Life and Easy Maintenance

20 times service life than traditional
machine, decrease maintenance greatly.



Integrated Structure

Small and compact size, less occupied
area, easy transportation



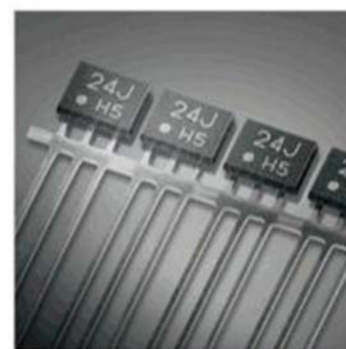
FEATURES

- High marking speed
- The power is controlled by software and is continuously adjustable
- The engraving cannot be wiped permanently
- Anti-fake digital automatic generation
- No consumables, no wearing parts, no maintenance, low running cost
- Perfect realization of online dynamic and static marking, suitable for different production lines

APPLICATIONS

Metal or non-metallic materials can be marked. Applied to the online electronic components, auto parts, metal instruments, watches, tobacco packaging, pharmaceutical packaging, architectural ceramics, beverage packaging, rubber products, shell nameplate, craft gift industry production line marking.

LASER MARKED SAMPLES



Specification

Model No.	GEMJB-F10A online laser marking machine
Power of Laser output	10W online laser marking machine
Laser wavelength	1064nm
Repeating frequency	20-200KHz
Carving range	Standard:110mm×110mm option: 175mmX175mm/260mmX260mm
Carving line speed	≤7000mm/s
Minimum line width	0.1mm
Repeating precision	±0.01
Power supply	220V/50Hz/8A
Power consumption	500W
Cooling method	Inbuilt air cooling
Control interface	Standard USB
File format	All fonts/characters in characters library of WINDOWS
Optical path system size	800mmX150mmX180mm