



# GEM

Double head co2 laser engraving machine

GEM-L1812



## GEM LASER LIMITED

A Legend Laser machine Manufacture & Solutions

Add . : No.442 ,Wuluo Road,Wuhan,430061 P.R.China .

Tel. : +86-27-84793136

Fax : +86-27-84793136

E-mail: [sales@gem-lasers.com](mailto:sales@gem-lasers.com)

Web : [www.gem-lasers.com](http://www.gem-lasers.com)

GEM LASER CO.,LIMITED



## OVERVIEW

GEM-L1812 double head laser engraving cutting machine is our company T series equipment for large, high speed requirements of leather fabrics and paper products industry drilling, engraving, batch processing, user development and design of a product. Two sets of laser system and laser head work at the same time, the user production, processing efficiency doubled. Products using a new T series transmission components, rail guidance system, shaft movement components, mechanical components, more scientific and reasonable, high speed performance more lead, speed is perfect, improve 30%, and improve work efficiency. Stability, accuracy, speed, three indicators can reflect world-class standards of high-end equipment. Typical used in high-speed cutting line requirements of cloth, leather, paper products and other processing industries. Its high speed cutting performance, humanized design concept and perfect use function are the first choice of middle and high end customers

## Product Advantage



### Lower Energy Consumption

Significant operation cost reduction due to about 50% photoelectric conversion efficiency.

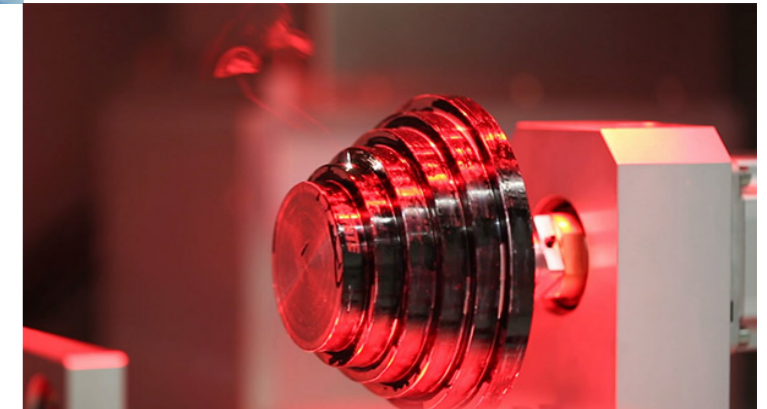


### No Consumables

Improved lifetime of laser module, maintenance free and no consumables ensure low maintenance and operation cost.

### High Speed

Perfect combination of software, hardware and light-speed galvanometer scanner realize high speed marking.



### High Reliability

Rapid cache transmission control, choice optical and electronic elements to ensure continuous work in long time and capacity.





## FEATURES

- The most advanced 32bit high-speed DSP controller is adopted in the world, and the performance is greatly improved. The stable S type acceleration and deceleration control system is designed with high speed and smooth operation.
- With full digital three-phase stepper motor driver and motor, the balance of dynamic torque greatly exceeds the two-phase stepping system widely used in the industry.
- USB2.0 high-speed interface for data transmission, support computer output and U disk import in two ways.
- Software new upgrade, more perfect functions. Fully support windows7.
- Support blackout glyph. The work is unexpectedly power-off, and can continue to work after restarting.
- The complete laser tube is fully upgraded and all the laser tubes with long life catalysis are adopted. Thin spot, long service life, reduce the cost of customer use supplies. High performance 80W laser tube, engraving and cutting performance.
- Single head and double head models are optional. Change any time. Adjust the distance between two laser heads conveniently and quickly.
- The front and rear feeding design is convenient for feeding. Manual feeding rack can be selected.

## APPLICATIONS

Clothing industry, shoes processing industry, bags processing, plush toy processing, cloth toys processing, leather, fur, warp knitting industry, packaging technology, etc.. The typical application of cutting cut pieces of clothing material, leather engraving, cutting, special-shaped trademark quote embroidered cloth cutting, leather garments, denim garment processing round face accessories and sculpture.

The fabric (silk fabrics, cotton cloth, decorative cloth, polyester fabric, non-woven fabric, chemical fiber cloth, medical cloth, pure hemp cloth, waterproof cloth, Jeans), leather (leather, artificial leather, decorative leather, packaging, leather, soft leather), acrylic, wood, paper. Nonmetallic materials such as film and rubber products.

## SPECIFICATIONS

Model 【1812】	Description
Laser Type	GEM sealed CO2 laser tube
Laser Power	Laser power standard 80W (optional 100W/130W/150W)
Processing area	single head: 900 x 1200mm   double: 1800 * 1200mm
Engraving speed	0-60000mm/min
Cutting speed	0-40000mm/min
Processing depth	Power 80W ≅ 15 (acrylic case)
positioning accuracy	≅ 0.01mm
Maximum scanning accuracy	2500DPI
Minimum row text characters	Chinese: 2×2mm,English: 1×1mm
Laser energy control	control software,control and manual control dual mode
Support graphics formats	AI,DXF,PLT,BMP,DST
Power supply	AC220V,50HZ
Engraving platform	push-pull type interchangeable platform, three options (grid platform, honeycomb platform, knife platform)
Split output support	YES
Working environment temperature	0-45 DEG C, humidity: 5-95 DEG C
Outline size	2350×1780×1090mm
Overall power	1500W

Remarks: the double head model is two laser heads. At the same time, two identical patterns can be processed. The spacing can be adjusted manually, and the double head machine can be light than a laser head. It can be adjusted to a single head and can be used to design the maximum width of the pattern. MT-L18120 double head adjustment for single head work, the biggest processing format is: 1800 \* 1200mm, double head work at the same time, each laser head is equal to the biggest processing width: 900 \* 1200mm

## LASER ENGRAVED SAMPLES

