



# GEM Laser Cutting Machine

CCD camera Vision laser cutting machine



## GEM LASER LIMITED

A Legend Laser machine Manufacture & Solutions

Add . : No.442 ,Wuluo Road,Wuhan,430061 P.R.China .

Tel. : +86-27-84793136

Fax : +86-27-84793136

E-mail: [sales@gem-lasers.com](mailto:sales@gem-lasers.com)

Web : [www.gem-lasers.com](http://www.gem-lasers.com)



## OVERVIEW

GEM adopts the world's leading CCD technology, specifically for embroidery, trademark, woven label, printed and perforated cut of a laser cutting machine, provides a complete set of cutting solutions for industry users.

## FEATURES

- 1.Slove the problem of waste due to manual positioning, time consuming and waste caused by human reasons
- 2.Identify large areas of cutting graphics, one person at the same time look after more than one device, a large number of artificial labor savings, electricity and venues, comprehensive cost-effective;
- 3.Automatic edge recognition, template set cutting, jigsaw cutting, strong recognition ability, positioning speed, high positioning accuracy;
- 4.Support feature matching, two point positioning, multi template positioning, contour extraction and other positioning methods;
5. Graphics editing, typesetting, control, output one-stop;
6. Support multi-source data formats: BMP, AL, PLT, DXF, DST and so on;
- 7.The opposite sex mark can be specially processed, the output power can be controlled accurately, and the three-dimensional embroidery mark shall be cut in layers;
- 8.Cutting precision, cutting speed, no leakage standard, no arbitrary cutting phenomenon, high cutting efficiency, large output.

## SPECIFICATIONS

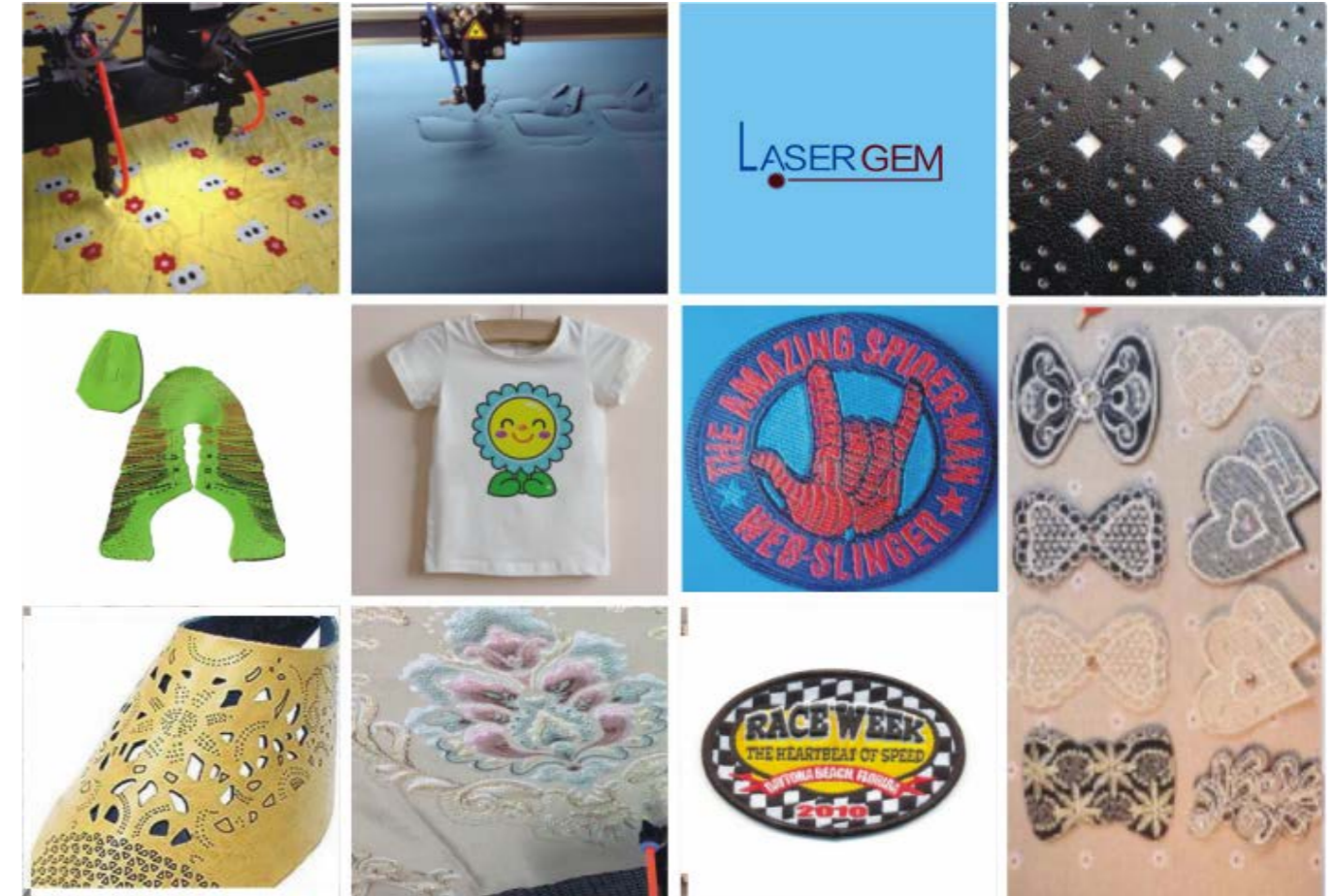
| Machine model        | GEM-100600 S                                   | GEM-12090S | GEM-160100S | GEM-180100S | GEM-180150 S |
|----------------------|--|------------|-------------|-------------|--------------|
| Laser type           | Hermetic and detached CO2 laser tube           |            |             |             |              |
| Laser Power          | 80W/100W/130W/150W                             |            |             |             |              |
| Cutting Area(m m)    | 1000×600                                       | 1200×900   | 1600×1000   | 1800×1000   | 1800×1500    |
| Cooling System       | Constant temperature water cooling circulation |            |             |             |              |
| Cutting speed        | 0-50000mm/min                                  |            |             |             |              |
| Positioning accuracy | ≤±0.01mm                                       |            |             |             |              |
| Date formats         | AI、BMP、PLT、DXF、DST                             |            |             |             |              |
| Working Voltage      | 220V±10%                                       |            |             |             |              |
| Machine power        | 2000W  |            |             |             |              |
| Work area            | Automatic feeding, honeycomb platform          |            |             |             |              |



## Device configuration list (Standard, Option)

| Item | Subsystem                     | Component                        | Model         | Quantity | Mark         |
|------|-------------------------------|----------------------------------|---------------|----------|--------------|
| 1    | Laser marking head            | High speed scanning galvanometer | Light Φ10mm   | 1pcs     | China        |
|      |                               | Galvanometer drive card          |               | 1pcs     |              |
|      |                               | Scanning field mirror            | f=160mm       | 1pcs     | China/Import |
|      |                               | Beam expander                    | 10X           | 1pcs     | China/Import |
| 2    | Laser                         | Green Laser                      | pulse-532-005 | 1set     | China        |
| 3    | Laser marking machine cabinet | Cabinet                          |               | 1set     | GEM          |
| 4    | Computer&software             | Computer                         | Desktop       | 1set     | Lenovo       |
|      |                               | Software                         | Software      | 1set     | GEM          |
| 6    | Workbench                     | Precision workstation            |               | 1set     | GEM          |
| 7    | Seat                          |                                  |               |          |              |

## Laser Marked Samples



## Applications

Applicable materials: leather, cloth, wool, plexiglass, plastic, film, rubber and so on.

Applicable industries: computer woven label, trademark, embroidered leather standard, stereo label, printed label, high pressure standard, and various special-shaped trademark pattern cutting craft embroidery, fabric printing, film printing and other precise positioning of non-metal material cutting and drilling.